



# DESTINATION GENEVA NATIONAL

| PROPERTY OVERVIEW & AMENITIES |





# GOLF AT DESTINATION GENEVA NATIONAL



## GOLF

Featuring 54 holes of Legendary Golf designed by the masters, Arnold Palmer, Gary Player and Lee Trevino. All courses offer meticulously manicured bent grass tees, fairways and greens, as well as five tee boxes offering a great golf experience for every level of player. Geneva National offers the chance to experience three of the best golf courses in Wisconsin at one club.

262.245.7000 | [DestinationGN.com](http://DestinationGN.com)

### THE ARNOLD PALMER COURSE

The Arnold Palmer Signature course at Geneva National is a big favorite. The course winds through the rolling woods of Geneva National, with three spectacular finishing holes along Lake Como. Arnold Palmer calls the Signature 17th hole one of his favorites, placing it as #11 in his "Dream 18" in the eastern part of the states.

The AP Course offers dramatic elevation changes and some very challenging and undulating greens making the golfer put their best putting abilities to the test.

### THE GARY PLAYER COURSE

The Gary Player Course opened with nine holes in 1995, and the Black Knight returned in 2000 to complete his quest: 18 scenic holes of tempting risk-reward golf and the only Player Course in Wisconsin. Traversing woodlands and wetlands, this premier par-72 layout has been honored repeatedly -- creating an ever challenging and somewhat forgiving round.

Risk/Reward is the theme of the Player Course. There are many birdie and eagle opportunities during the round with some chances to make a big score when being overly aggressive or making a bad swing or club choice. The risk/reward is present pretty much from the opening tee shot through the final approach shot to the 18th green. Many challenging tee shots and approach shots can be heroic or fateful.

### THE LEE TREVINO COURSE

Sprawling throughout the rolling Wisconsin countryside it is a challenge for the seasoned golfer yet forgiving for the beginner. This course plays to Mr. Trevino's natural fade, and features subtle dog-leg right holes on nearly every Par 4 & 5. Trevino has signed his name to only a handful of courses, and ours is one to experience.

The Trevino Course is a traditional parkland routing. The course presents many different shot values and often requires golfers to use every club in their bag.

## THE DANCE FLOOR

The perfect date night, family outing, or teambuilding event, GN's Dance Floor presents up to 27 holes of illuminated putt-putt on grass plus surround sound, a cocktail bar, bocce ball and firepits.

262.245.7000 | [DestinationGN.com/dance-floor](http://DestinationGN.com/dance-floor)



# LODGING AT DESTINATION GENEVA NATIONAL

## COTTAGES

### Multi-Bedroom Units with Course Views

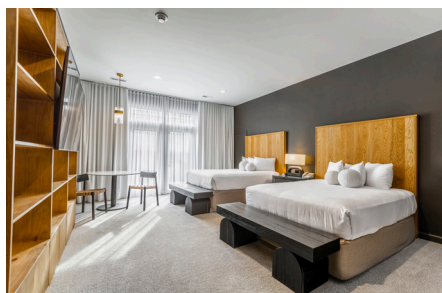
Designed for the group golf experience but also perfect for weddings, corporate retreats and family vacations, the Cottages feature six buildings, each with separately keyed guest rooms, common living space, full kitchens, outdoor patios, and an exclusive putting green overlooking Player 18.



### FEATURES

- The Cottages complex features six buildings, each with six separately keyed deluxe guest rooms (bedroom + full bath)
- Common areas - including living, dining, recreation areas and a full kitchen
- In-room Keurig coffee machine
- Mini refrigerator
- Full access to the Geneva National Wellness Center
- Wireless internet access
- Access to a private 6,000 sq. ft. putting green
- Access to the Lodge's indoor & outdoor saltwater pools

[DestinationGN.com/cottages](http://DestinationGN.com/cottages)



### DOUBLE QUEEN ROOM

A 16' x 20' rooms on the main and upper levels featuring two queen beds, two club chairs, full ensuite\* bathroom, flat screen TV, complimentary WiFi, and expansive views of Gary Player's 18th fairway.

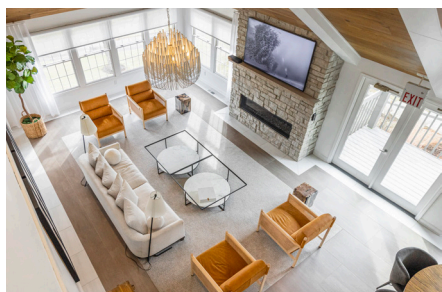
*Upper level accessible by interior stairs.*



### DOUBLE QUEEN PATIO ROOM

A 16' x 20' room on the lower level featuring two queen beds with glass door to a private patio, two club chairs, full ensuite\* bathroom, flat screen TV, complimentary WiFi, and expansive views of Gary Player's 18th fairway.

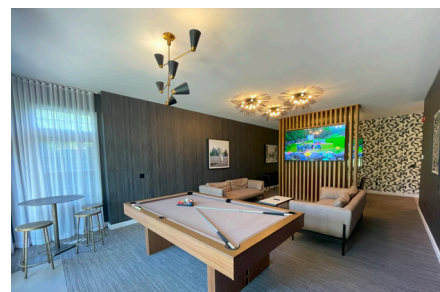
*Lower level accessible by interior stairs and patio.*



### MAIN LEVEL LIVING AREA



### DINING & KITCHEN AREA



### LOWER LEVEL LIVING AREA



# LODGING AT DESTINATION GENEVA NATIONAL

## SUITES

### The Ultimate Lake Geneva Retreat

The sleek, modern suites boast airy one-bedroom and open floor plans with five-star standards. Tucked into a grassy knoll adjacent to the Clubhouse, these units summon in the sun with private patios, terraces, and luxe showers with windowed views.



### FEATURES

- 32 total two-queen and king suites
- Suites feature 630 to 800 sq. ft. with elevated ceilings
- In-room Keurig coffee machine
- Beverage chiller
- Full access to the Geneva National Wellness Center
- Wireless internet access
- Access to a private 6,000 sq. ft. putting green
- Access to the Lodge's indoor & outdoor saltwater pools

262.245.7000 | [DestinationGN.com/suites](https://DestinationGN.com/suites)



### LEGENDS KING SUITE

The ultimate in privacy, this gracious one-bedroom suite presents a separate living room with cozy seating, flat screen, fireplace, and furnished patio or terrace.

*Expansion option: legends king suite may be connected to an two-queen room to create a two-bedroom suite.*



### KING SUITE

Sleep here, gather there. That's the gist of our ultra-spacious king suites with dedicated sleeping and living areas plus a custom media wall. Soak in verdant views from your private furnished patio or terrace, linger in a lofty spa shower, or mix it up at your in-room bar.

*Some units also may feature a fireplace.*



### TWO-QUEEN SUITE

Bright and breezy, these gracious suites offer a luxe sleeping area with two queen beds, cozy offset seating, desk in windowed nook, mudroom entry, in-room bar, and views of the Player Course or nature preserve.

*Some units may include a bonus patio or terrace with soft seating.*



# LODGING AT DESTINATION GENEVA NATIONAL

## LODGE GENEVA NATIONAL

### A Modern Vibe Hotel with Amenities

Sleek and edgy with a twist of Wisco tradition, Lodge Geneva National delivers a fresh take on Lake Geneva with its contemporary design, including a tech-savvy lobby, smart and sumptuous dining, and outdoor patio with fire features, saltwater outdoor pool, hot tub and poolside cabanas.

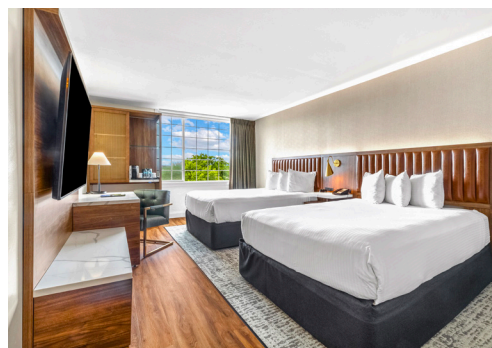
Reimagined Single King Room



### FEATURES

- 146 deluxe guests rooms & suites
- In-room Keurig coffee machine
- Mini refrigerator
- Outdoor veranda with fire feature overlooking Lake Como
- Indoor & outdoor pools
- Fitness center
- Wireless internet access
- Live weekend music

262.245.7000 | [DestinationGN.com/lodge](https://DestinationGN.com/lodge)



### rebranding & reimagining LODGE GENEVA NATIONAL

The acquisition of The Ridge Hotel by Geneva National in July 2024 marked an exciting new chapter. Now rebranded as Lodge Geneva National, the property is being transformed to reflect our upscale yet welcoming club lifestyle brand. The first wave of fully reimagined guest rooms is now complete, with the full room transformation debutting summer 2025.





# YEAR ROUND DINING AT DESTINATION GENEVA NATIONAL



## HUNT CLUB STEAKHOUSE

Inside this unique historical building is one of the best restaurants in Wisconsin. Lake Geneva's premier steakhouse features an upbeat and lively atmosphere for drinks, appetizers or a delicious steak dinner. The menu offers an expansive variety of delicious homemade food including Prime Ribeye and several other cuts of mouthwatering steaks. Great libations and an award-winning wine list make the Hunt Club Steakhouse the perfect place to unwind with friends after a busy day or to enjoy an intimate night out with someone special. *Photo of the private dining space The Crane Room.*

262.245.7200 | [HuntClubSteakhouse.com](http://HuntClubSteakhouse.com)



## TURF. KITCHEN + TAP

This year-round restaurant and bar, located inside the Geneva National Clubhouse, offers a menu featuring a variety of sandwiches, fresh fish, tacos, and special themed nights such as fish fry, ribs, and prime rib. During the summer season, you can enjoy al fresco dining on the terrace, which overlooks Palmer No. 18 and Lake Como.

262.245.7042 | [DestinationGN.com/turf](http://DestinationGN.com/turf)



## CRAFTED ITALIA

At Crafted Italia we're passionate about more than just our Italian inspired menu and crave-worthy pizzas. We've taken an artisan approach to every aspect of our offerings by sourcing premium ingredients from sustainable local farms to put a modern touch on your favorite Italian classics. Every day there is a delicious new seasonal favorite, made from scratch, waiting to be discovered and devoured. A tempting assortment of wine, hand-selected brews, and crafted libations give you endless ways to treat yourself. We invite you to sit back and savor every bite, sip, and moment.

262.249.3832 | [CraftedLakeGeneva.com](http://CraftedLakeGeneva.com)



## BEAN + VINE COFFEE BAR

Located in the lobby of Lodge Geneva National, this chic beverage boutique offers a range of amenities, including unlimited internet access, an impressive communal table equipped with USB ports, hand-roasted Valentine coffee blends, baked goods, grab-and-go snacks, and lunch items. It's the ideal place to linger and relax, brainstorm and browse, gather and enjoy a caffeinated beverage.

262.249.3834 | [DestinationGN.com/bean-vine](http://DestinationGN.com/bean-vine)



# SEASONAL DINING AT DESTINATION GENEVA NATIONAL



## DECK BAR

Located on the outdoor patio at Lodge Geneva National, the Deck Bar is a trendy place to enjoy food & drink specials, live weekend entertainment and breathtaking views of the wooded slopes and shores of Lake Como. Sip from a specialty cocktail while you take in a rose-colored sunset on our lakeview patio. Multiple fire features and lounge seating provide a relaxing setting to hangout and enjoy a drink as the day comes to an end. *Open daily during the summer season.*

[DestinationGN.com/deck-bar](http://DestinationGN.com/deck-bar)



## POOLSIDE CABANAS

To further elevate your poolside experience, we're introducing a private cabana program. Reserve a cabana outfitted with cozy lounge furniture, flat screen, beverage chiller and upgraded fluffy towels. Each Cabana can seat up to 12 people, if your party is larger a second rental will be required.

[DestinationGN.com/cabanas](http://DestinationGN.com/cabanas)



## PALOMA CANTINA

GN's newest sunrise-to-sunset hot spot, the outdoor Paloma Cantina borders the one-acre Dance Floor putting course and serves up a quick and casual dining and drink menu plus picturesque course and lake views. *Open daily during the summer season.*

[DestinationGN.com/paloma-cantina](http://DestinationGN.com/paloma-cantina)



## SNOW GLOBE EXPERIENCE

Destination Geneva National introduces the new Snow Globe Experience, part star gazing observatory, part gondola carriage, part secluded conclave for making memories with friends and family. Each snow globe can seat up to eight adults and is outfitted with infrared and forced air heating to ward off the winter chill. Bluetooth included to cue up your favorite playlist.

[DestinationGN.com/snow-globe](http://DestinationGN.com/snow-globe)



# PROPERTY AMENITIES AT DESTINATION GENEVA NATIONAL



## SALTWATER POOLS

The Lodge's outdoor pool deck featuring cabanas, hot tub and outdoor showers. Enjoy a refreshing dip in the pool no matter the time of year! The indoor pool features a whirlpool, co-ed sauna and eucalyptus steam room.

[DestinationGN.com/lodge-pool](http://DestinationGN.com/lodge-pool)



## GOLF

Featuring 54 holes of Legendary Golf designed by the masters, Arnold Palmer, Gary Player and Lee Trevino. All courses offer meticulously manicured bent grass tees, fairways and greens, as well as five tee boxes offering a great golf experience for every level of player. Geneva National offers the chance to experience three of the best golf courses in Wisconsin at one club.

262.245.7000 | [DestinationGN.com](http://DestinationGN.com)

## THE DANCE FLOOR

The perfect date night, family outing, or teambuilding event, the Dance Floor presents 27 holes of illuminated putt-putt on grass plus surround sound, a cocktail bar, bocce ball and firepits.

262.245.7000 | [DestinationGN.com/dance-floor](http://DestinationGN.com/dance-floor)



## FITNESS CENTER

Lodge Geneva National features a 24-hour fitness center with state-of-the-art LifeFitness equipment. Guests staying at The Cottages and Suites also have access to the Member's Club Wellness Center.

## MARINA

Lodge Geneva National's Marina offers paddleboards and kayaks for rent to the public and hotel guests during the summer season. Life jackets are included with rentals. Dogs are welcome to ride our kayaks and paddleboards, but must have life jackets as well.



## SALON & SPAS

Local salon & spas located within in 10 miles of Destination Geneva National.

Geneva Salon and Spa Suites | [GenevaSalonSuites.org](http://GenevaSalonSuites.org)  
1.4 miles, located on Geneva National property

Clear Waters Salon and Day Spa | [ClearWatersSalonSpa.com](http://ClearWatersSalonSpa.com)  
3.0 miles, located in Williams Bay, Wisconsin

Jasmine Salon & Spa | [JasmineSalonSpa.com](http://JasmineSalonSpa.com)  
7.0 miles, located in Lake Geneva, Wisconsin